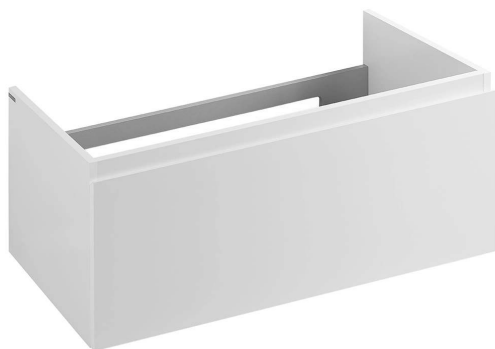


Discontinued

Ref. 6572003

EAN Code. 5604815909401



Description

Discontinued product - available until permanent stock rupture.

Technical Information

Length: 995 mm

Width: 468 mm

Height: 430 mm

Weight: 29.60 kg

Collection: Clean

Product type: Vanity units

Style: Contemporary

Product Format: Rectangular

Material: HPL-coated waterproof chipboard

Bowl position: Centre

Installation type: Wall hung

Features

- With drawer with Smoove closing system
- With inner drawer with removable organiser
- With built-in handle
- Fixing kit included

Variations



White (Discontinued)
1190x457x432 mm
Ref. 6582000
EAN Code. 5604815909708
Weight: 48.00 kg



White (Discontinued)
602x465x430 mm
Ref. 6552000
EAN Code. 5604815905427
Weight: 20.55 kg



Walnut (Discontinued)
1190x457x432 mm
Ref. 6582087
EAN Code. 5604815915600
Weight: 48.00 kg



Walnut (Discontinued)
602x465x430 mm
Ref. 6552087
EAN Code. 5604815915518
Weight: 20.55 kg



Red (Discontinued)
995x468x430 mm
Ref. 6572014
EAN Code. 5604815909401
Weight: 29.60 kg



Red (Discontinued)
1190x457x432 mm
Ref. 6582014
EAN Code. 5604815909715
Weight: 48.00 kg



Red (Discontinued)
602x465x430 mm
Ref. 6552014
EAN Code. 5604815905434
Weight: 20.55 kg



Red (Discontinued)
800x465x430 mm
Ref. 6562014
EAN Code. 5604815907575
Weight: 31.30 kg



Tulipié fumé (Discontinued)
1190x457x432 mm
Ref. 6582003
EAN Code. 5604815909722
Weight: 48.00 kg



Tulipié fumé (Discontinued)
800x465x430 mm
Ref. 6562003
EAN Code. 5604815907551
Weight: 31.30 kg

Downloads

Cleaning Manuals

Cleaning Manual (PDF) ,

2D & 3D Files

65720 CAD 2D (ZIP) , 65720 CAD 3D (ZIP) , 65820 CAD 2D (ZIP) , 65820 CAD 3D (ZIP) , 65520 CAD 2D (ZIP) , 65520 CAD 3D

(ZIP) , 65620 CAD 2D (ZIP) , 65620 CAD 3D (ZIP) ,

Technical Drawings

65720 DT (PDF) , 65820 DT (PDF) , 65520 DT (PDF) , 65620 DT (PDF) ,

Installation Dimensions

Cotas de Instalacao Clean (PDF) ,

