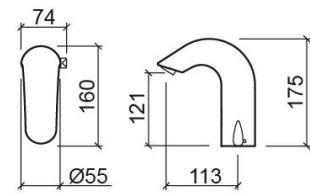


Hera battery operated sensor basin mixer - Chrome

Ref. 540037111

EAN Code. 5604815607581



Technical Information

Length: 160 mm

Width: 74 mm

Height: 175 mm

Weight: 1.27 kg

Collection: [Hera](#)

Product type: Taps

Style: Contemporary

Material: Brass

Installation type: Basin shelf

Features

- Power supply - 9V battery
- Fixing kit included
- Hot & cold flexible connectors and battery box included
- Sensor mixer
- Lead-free

Downloads

Cleaning Manuals

Cleaning Manual (PDF) ,

Water Efficiency

EH - Hera 5400371 (PDF) ,

2D & 3D Files

5400371 CAD 2D (ZIP) ,

Technical Drawings

5400371 DT (PDF) ,

