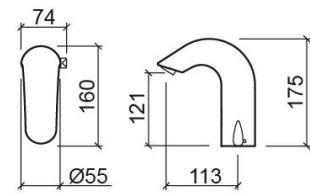


Hera mains operated sensor basin mixer - Chrome

Ref. 540038111

EAN Code. 540038111



Technical Information

Length: 160 mm

Width: 74 mm

Height: 175 mm

Weight: 1.92 kg

Collection: [Hera](#)

Product type: Taps

Style: Contemporary

Material: Brass

Installation type: Basin shelf

Features

- Fixing kit included
- Hot & cold flexible connectors and transformer included
- Sensor mixer
- Lead-free
- Power supply - 9V transformer



Downloads

Cleaning Manuals

Cleaning Manual (PDF) ,

2D & 3D Files

5400381 CAD 2D (ZIP) ,

Technical Drawings

5400381 DT (PDF) ,

