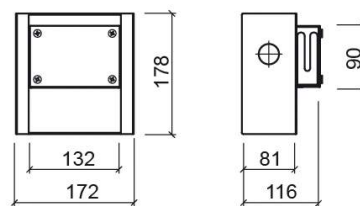
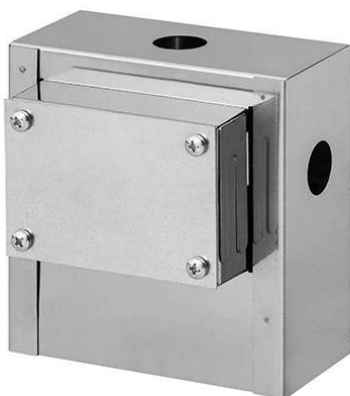


## Installation box for Line 42 concealed 3-way shower valve - Chrome

Ref. 5C55710111

EAN Code. 5604815616026



### Technical Information

Length: 172 mm

Width: 116 mm

Height: 178 mm

Weight: 0.91 kg

Collection: Componentes, Line 42

Product type: Taps

Material: Stainless steel

### Features

- Optional installation box

## Downloads

### 2D & 3D Files

[5C557101 CAD 2D \(ZIP\)](#) , [5C557101 CAD 3D \(ZIP\)](#) ,

### Assembly Instructions

[5C557101 \(PDF\)](#) ,

### Technical Drawings

[5C557101 DT \(PDF\)](#) ,

