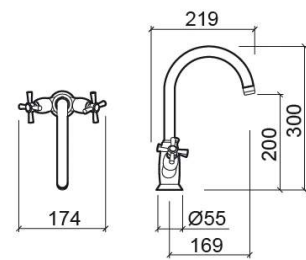


## Rimini basin mixer with ceramic disk cartridge - Chrome

Ref. 518031111

EAN Code. 5604815602982



### Technical Information

Length: 219 mm

Width: 174 mm

Height: 300 mm

Weight: 1.95 kg

Collection: Rimini

Product type: Taps

Style: Traditional

Material: Brass

Installation type: Basin shelf

### Features

- Equipped with ¼-turn ceramic disc cartridges
- Fixing kit included
- Hot & cold flexible connectors included
- Dual control mixer
- Waste not included



Downloads

- [Cleaning Manuals](#)
- [Cleaning Manual \(PDF\)](#) ,

