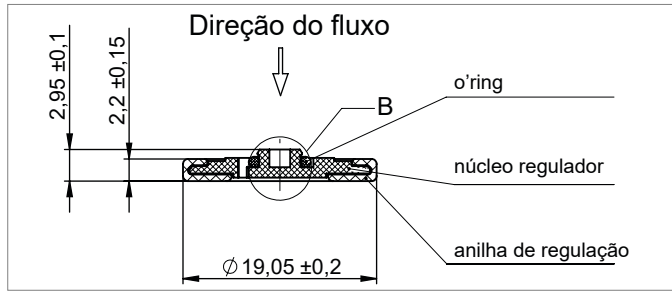
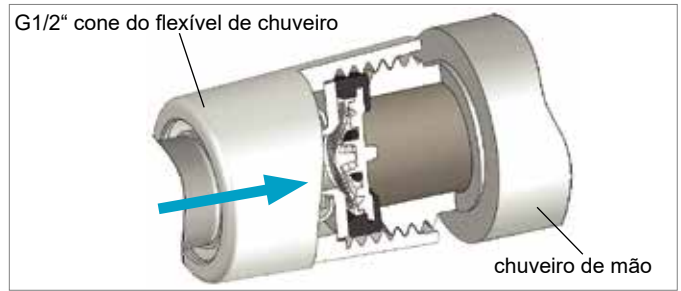


Regulador de fluxo simples

Dimensões (em mm)

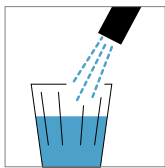


Anilha de regulação de caudal 1/2"

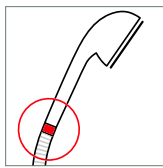


Posição de montagem recomendada para chuveiros de chuveiro

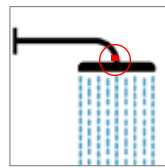
Onde usar



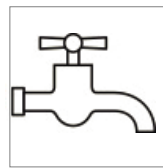
Apenas em água potável



Chuveiros de mão



Chuveiros de cabeça

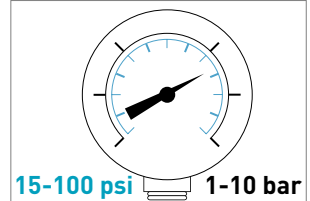
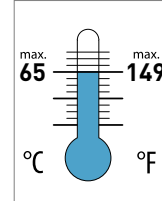


Torneiras / bicas de parede



Chuveiro de bidê / higiênico

Condições de funcionamento



Os valores de pressão indicados referem-se à pressão da linha de alimentação. Evite o golpe de ariete.

Instruções de montagem

ATENÇÃO!

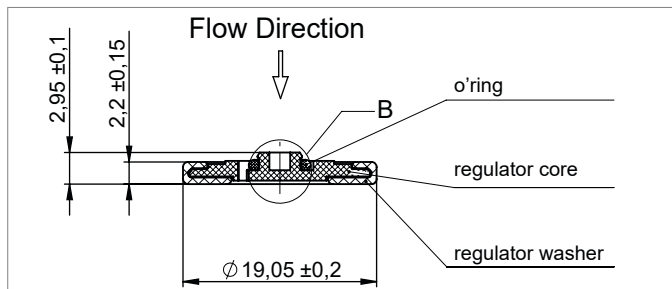
O produto não pode ser alterado!
Temperatura máxima de trabalho 70°C

ATENÇÃO!

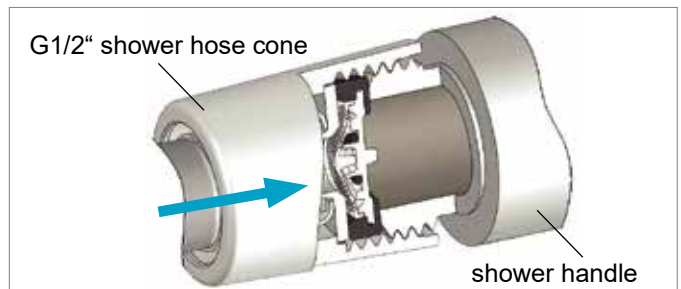
Aperto (binário) máximo 2.0 Nm

Flow Regulator

Dimensions (in mm)

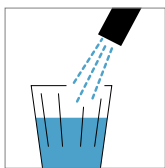


PCW-01 1/2" washer regulator

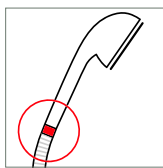


Recommended mounting position for shower handles

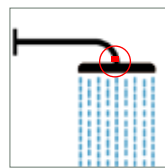
Intended Use



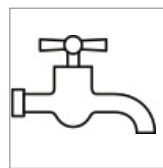
Drinking water only



Shower handles



Shower heads

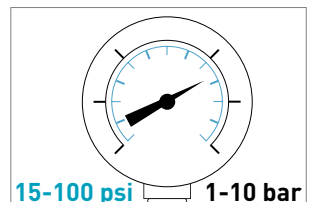
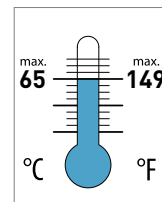


Bib taps/ wall spouts



Shattafs/ bidet showers

Operating Conditions



Indicated pressure values refer to supply line pressure. Avoid water hammer.

Assembly Instructions

ATTENTION!

Product may not be altered!
May not be used for hot water application exceeding 70°C

ATTENTION!

Max. mounting torque 2.0 Nm